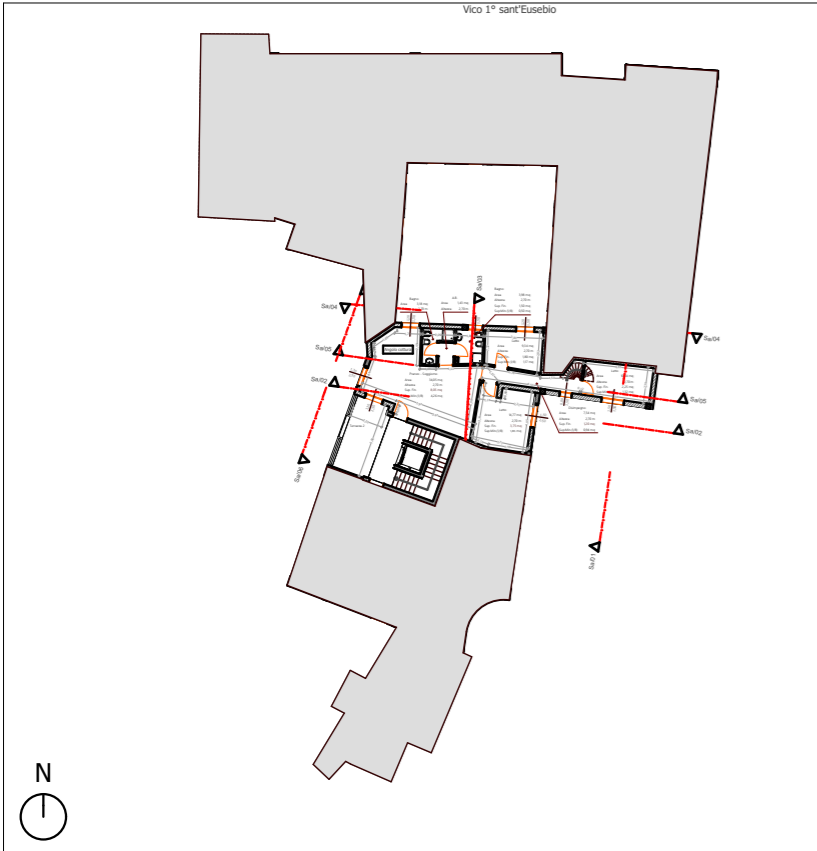
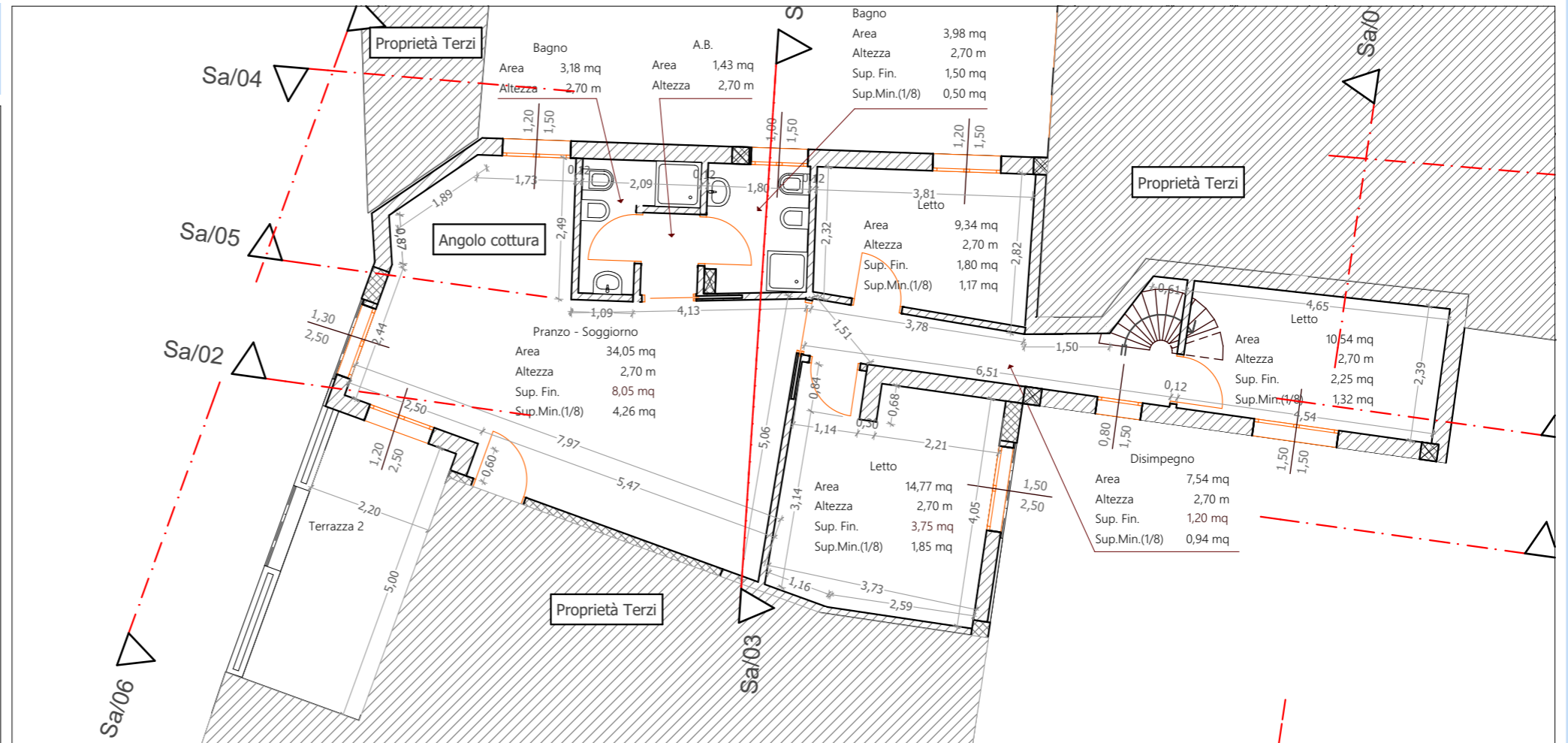


# Piano terzo Corpo E10



PLANIMETRIA GENERALE\_Scala 1:500

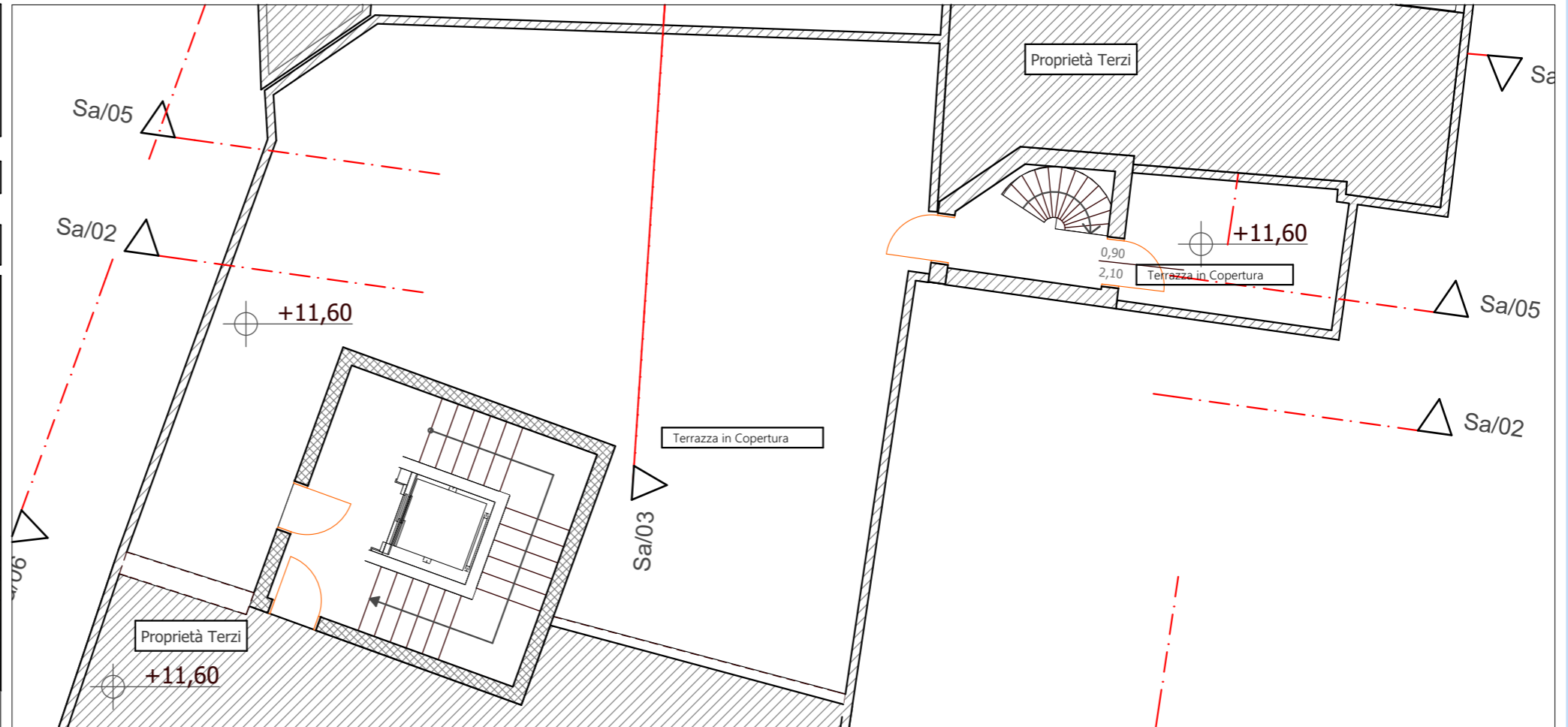


PIANTA PIANO TERZO\_Scala 1:100

TABELLA RIEPILOGATIVA SUPERFICI	
Superficie commerciale appartamento:	109,36 mq
Superfici terrazze:	12,50 mq
Superfici lastrico solare:	121,16 mq

Superficie commerciale totale:	143,82 mq
--------------------------------	-----------

PREZZO DI VENDITA:



PIANTA COPERTURA\_Scala 1:100

